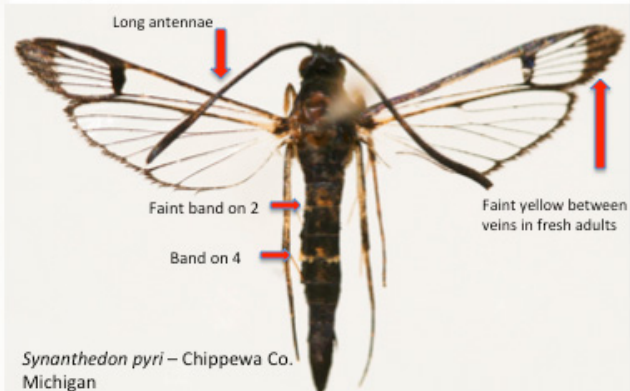
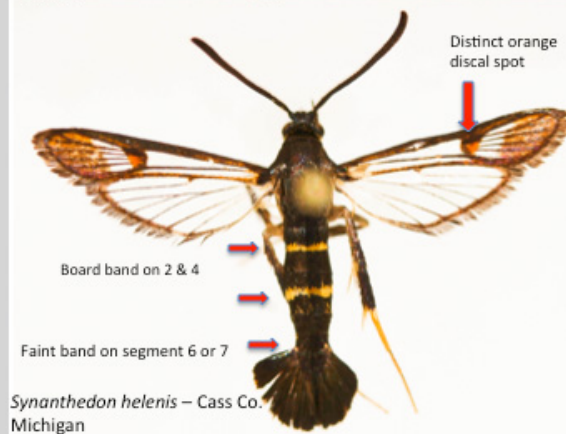
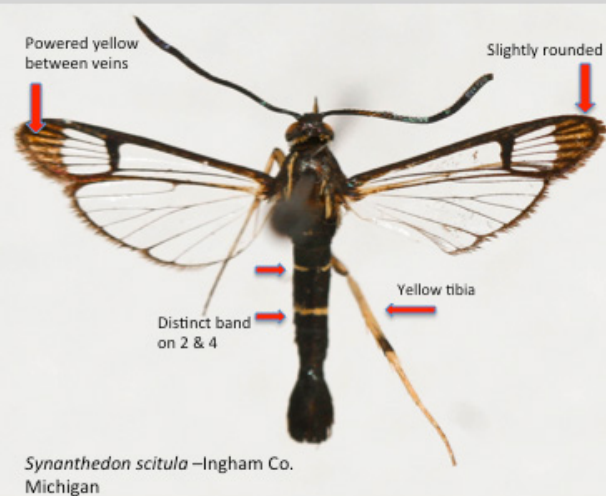
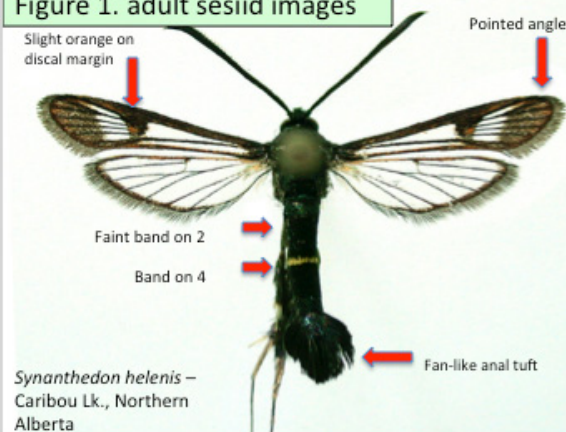
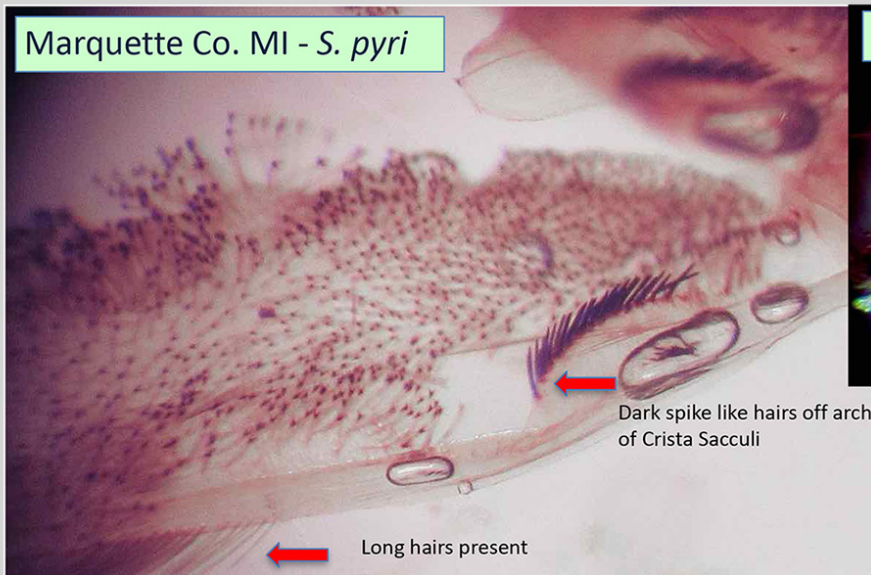


Figure 1. adult sesiid images



Marquette Co. MI - *S. pyri*



Dark spike like hairs off arch of Crista Sacculi

Long hairs present

Ingham Co. MI, *S. scitula*

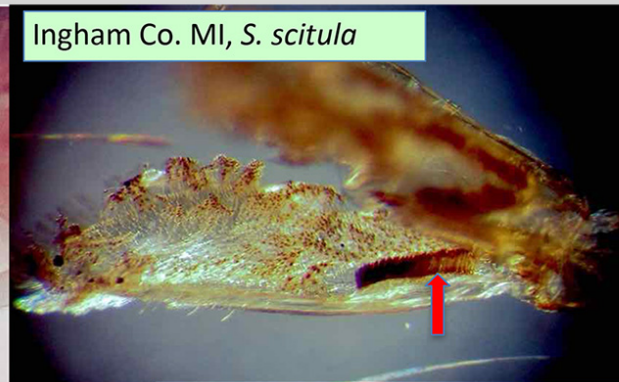
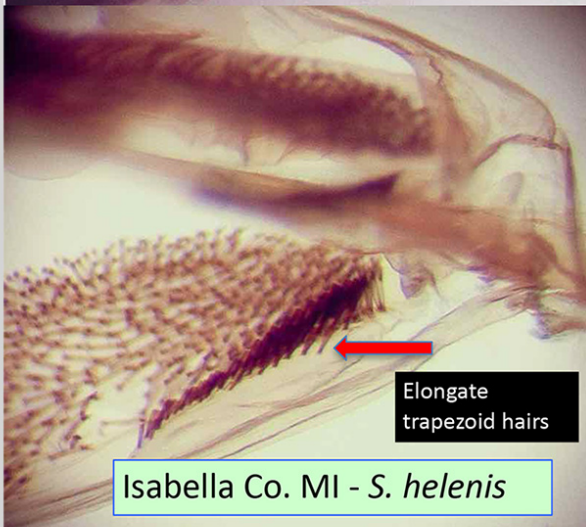


Figure 3. Genitalia of male *Synanthedon scitula*, *helenis* & *pyri*



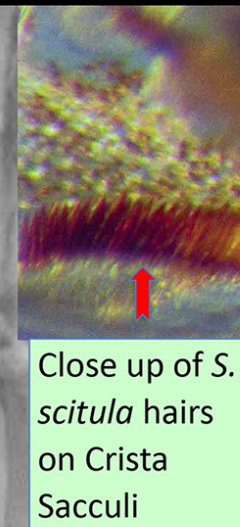
Elongate trapezoid hairs

Isabella Co. MI - *S. helenis*



Image of entire genitalia

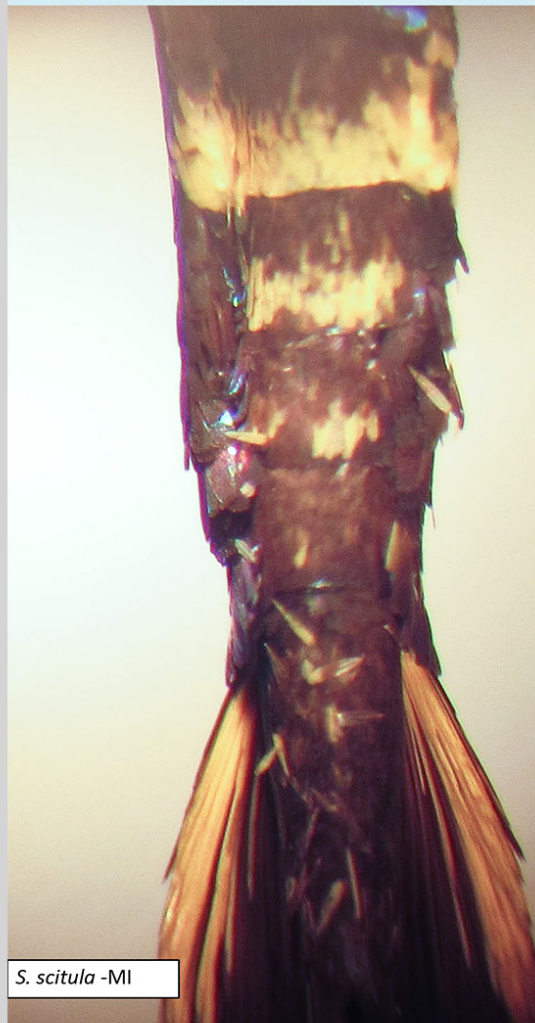
*Synanthedon helenis*  
Saskatchewan specimen  
SK. Crooked Lake  
June 22, 2010



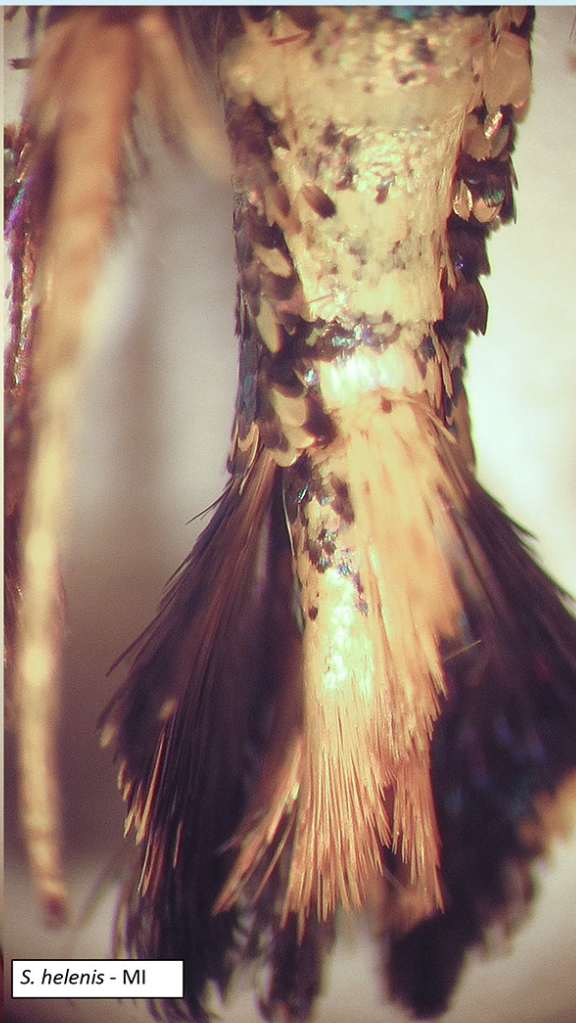
Close up of *S. scitula* hairs on Crista Sacculi



Figure 2. Ventral view of the abdomens of three *Synanthedon* species



*S. scitula* - MI



*S. helenis* - MI



*S. pyri* - MI